

ELECTRICAL ENGINEERING®

NUMBER

65

A Special Message from the Executive Director--

IMPROVEMENTS IN THE IEEE LIFE INSURANCE PLAN

Dear Member,

I am gratified to announce a substantial improvement in our member Life Insurance Plan. Effective September 1, 1976, member benefits will be increased by 20 percent at no extra charge for everyone under age 61 except residents of Texas and Wisconsin. This will mean that coverage will be available to members under age 61 in multiples of \$12,000. There will also be an increase in maximum member coverage from \$100,000 to \$120,000, except for residents of Wisconsin.


In addition, a technical adjustment to conform with modern actuarial tables will further reduce the cost of coverage for members under age 45, except in Texas and Wisconsin.

And finally, maximum coverage available for spouses in all states except Wisconsin will be increased to \$35,000 in multiples of \$5,000.

While it is not possible to make all these changes in the coverage available under the individual policies for Texas and Wisconsin residents, arrangements have been made so that, to the extent dividends permit, residents of these states will receive an extra dividend credit designed to reduce the net cost of their coverage to the level provided in other states.

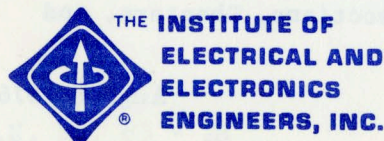
IEEE has been assured by its Administrator that these moves are actuarially sound and represent the conservative approach that has made the IEEE Life Insurance Plan particularly successful over the last several years. It pleases me as Executive Director that it has been possible to improve the plan in this manner.

Additional information about the Life Insurance, or any of the other coverages available as part of the IEEE Group Insurance Program, should be obtained directly from the IEEE Administrator, 1707 L Street, N.W. (Suite 700), Washington, D.C. 20036--(202) 296-8030.



A. C. Schulke, Jr.

Never in the history of IEEE has the number of voters casting ballots in the Annual Election exceeded 37 percent of those eligible to make a choice. In a year when no less than three candidates of varying philosophies are running for President, two for Vice President, and three Propositions with great potential impact on IEEE affairs are on the ballot, it would be tragic if a minority of the membership decided the election outcome. Electrical Engineering strongly urges each and every reader to consider the issues and register a choice.



A management newsletter on IEEE operations . . . to encourage communication among all organizational entities and the staff . . . ELECTRICAL ENGINEERING® is published bimonthly by IEEE, 345 East 47 Street, New York, N.Y. 10017

EYE ON THE EXECUTIVE

New election procedures have been instituted to ensure accuracy of ballot handling at minimal cost. For the first time, a "Port-o-punch" ballot will be used, permitting efficient machine-counting. The firm of Wells Fargo, which had been hired to oversee the printing and mailing of all ballots, will also collect the returned ballots from a special post office box, deliver them to IEEE's Piscataway Service Center, and supervise both the process of sorting out and hand-tallying "problem" ballots and the machine-counting of properly punched ballots.

All ballots for the annual IEEE election will be mailed on or before September 1 and must be returned by 12 noon, November 1. As in the past, IEEE's Tellers Committee is responsible for their processing.

Editors, through your Section and Region publications and your Group and Society newsletters, you can help get out the vote. This election may be the most important in years and it just doesn't make sense for issues to be decided and candidates chosen by a minority of the membership.

New dates have been set for the upcoming meetings of the Executive Committee and Board of Directors. They are:

Executive Committee

Sept. 22, 1976--New York
Dec. 3, 1976--Orlando, Fla.

Board of Directors

Sept. 23, 1976--New York
Dec. 4-5, 1976--Orlando, Fla.

USAB NEWS

Deducting commuting expenses for Federal income tax purposes and the rights of the Government in the case of inventions by Federal employees were the subjects of two recent court rulings that may be of particular interest to EEs. USAB, which is attempting to track both legislation and court cases of potential concern to the IEEE member, has issued an "Information Bulletin" (IB 002) detailing both rulings and their implications. For further information, write J. M. Kinn, IEEE Washington Office, 2009 K Street, N.W., Washington, D.C. 20006.

Engineers are becoming increasingly involved

E.E. is sent without cost beyond dues to officers of IEEE Boards, Committees; Divisions, Societies, Groups, Conferences; Regions, Councils, Sections, Subsections, Chapters, and Branches. Second-class postage is paid at Piscataway, N.J.

in the legislative process around the U.S., as evidenced most recently by the activities of two groups with which USAB is maintaining close contact. In California, the members of a USIIA (United States Intersocieties Legislative Advisory Committee) task force report close cooperation with the California State Legislative Advisory Commission on two fronts: USIIA reviewed the Commission's advice to legislators on the California Coastal Land Use Bill, which impacts the state's power generation and economic development; and the two groups worked closely on the California Nuclear Initiative, later voted down by a two to one margin.

Profile:
Irene C. Peden



IEEE's 1976 Vice President for Educational Activities is Irene Peden. A Fellow of the Institute, Professor Peden is Associate Dean of Engineering at the University of Washington, Seattle, where she has been on the faculty since 1961. In addition to her reputation as a leading engineering educator, Dr. Peden is noted as an expert in radio science: she was the first U.S. woman engineer/scientist to conduct field work in the interior of the Antarctic continent and later produced major publications dealing with radio propagation and the polar ionosphere and the dielectric and loss properties of the Antarctic ice sheet at very low frequencies. Holding the B.S. degree in electrical engineering from the University of Colorado and the M.S. and Ph.D. degrees in EE from Stanford University, Dr. Peden has been a consultant to the United Nations Educational, Scientific and Cultural Organization (UNESCO) and to the U.S. Food and Drug Administration (FDA). She has also been a member of the Committee on Space Physics of the National Academy of Sciences and, currently, she is on the Engineering Education and Accreditation Committee of the Engineers Council for Professional Development.

This is the fourth in a series of profiles of IEEE officers.



THE INSTITUTE OF
ELECTRICAL AND
ELECTRONICS
ENGINEERS, INC.

345 EAST 47th STREET · NEW YORK, N.Y. 10017

INFORMATION 212 644-7900
GENERAL MANAGER 212 644-7910
CONTROLLER 212 644-7748
EDUCATIONAL SERVICES 212 644-7870
MEMBER/FIELD SERVICES 212 644-7750
PUBLISHING SERVICES 212 644-7560
SPECTRUM 212 644-7555
TECHNICAL SERVICES 212 644-7890
SERVICE CENTER 201 981-0060
WASHINGTON OFFICE 202 785-0017

QUESTIONNAIRE

To Recipients of Electrical Engineering

From Donald Christiansen, IEEE Spectrum

In its coverage of the members' professional concerns, Spectrum would appreciate your comments on the following possible topics:

Topic	High Priority	Desirable	Low Priority	Undesirable
1. Employer-employee interface and ethics	—	—	—	—
2. Registration and certification	—	—	—	—
3. Engineer-employee fringe benefits	—	—	—	—
4. Patent rights and legislation	—	—	—	—
5. Engineering unions	—	—	—	—
6. Pension legislation	—	—	—	—
7. Mid-career education	—	—	—	—
8. The older engineer	—	—	—	—
9. Employment of minorities	—	—	—	—
10. Consolidation of engineering societies	—	—	—	—
11. Other (specify)	—	—	—	—

Elaborations are welcome, particularly on "high priority" and "undesirable" choices.

Please return this questionnaire to:

Stella Grazda
IEEE Spectrum
345 East 47 Street
New York, N.Y. 10017

continuing education services

Attention: REGION and SECTION CHAIRPERSONS

Here is how you can
become more involved in
ENGINEERING EDUCATION
FOR IEEE MEMBERS...

At the Regional Level

An enthusiastic person is needed to act as liaison between the IEEE-EAB Short Course Committee and your region. The Region Director is asked to appoint the "Region Continuing Education Coordinator."

- Duties:
1. Gain and report first hand knowledge of the Region's educational needs.
 2. Engender the continuing education concept among Section members.
 3. Encourage and support a Continuing Education Coordinator in each section.
 4. Attend a two- to three-hour session on education during the annual meeting (with TAB education representatives).

At the Section Level...

The "Section Continuing Education Coordinator" appointed by the Section Chairperson will be liaison between the Section and the Region.

- Duties:
1. Gain grass roots knowledge of the educational needs of the Section.
 2. Disseminate information (with cooperation of EAB) on courses now available.
 3. Make recommendations on "new" courses which EAB can create.
 4. Scheduling of Short Courses in cooperation with EAB.
 5. Promotional cooperation and suggestions for EAB.

IEEE-EAB SHORT COURSES
COME TO
YOU TWO WAYS

1. Once you decide on an IEEE Short Course, the responsibility for its success rests with IEEE/EAB. The bulk of the arrangements and promotional support are performed by IEEE Headquarters staff. In the event of lack of response, all preliminary costs are borne by EAB.

Surplus sharing: 30% - EAB
20% - G/S evaluation
50% - Sponsor Section

2. The second plan is less costly, but you do the majority of the arrangements and promotion. IEEE/EAB provide the instructor and supporting books. Of course, counsel is always available at no extra charge.

Most important - we need the name and address of the Region and Section Continuing Education Coordinators. ACT NOW. Fill out and send the coupon (see next page) to Vincent J. Giardina, your IEEE contact in Continuing Education, at your earliest convenience.

Please turn page. See the need for names of those who can spark the EAB continuing education short course program.



THE INSTITUTE OF ELECTRICAL AND ELECTRONICS ENGINEERS, INC.

FOR ADDITIONAL INFORMATION CONTACT VINCENT J. GIARDINA
445 HOES LANE, PISCATAWAY, NEW JERSEY 08854

REGION EDUCATION CHAIRPERSONS

REGION 1	REGION 2	REGION 3 (2 columns)		REGION 4	REGION 5
	<u>GEORGE ETZWEILER</u>			<u>HARRY HEDGES</u>	
SECTION EDUCATION CHAIRPERSONS					
BERKSHIRE	AKRON	ALABAMA	ATLANTA	ARROWHEAD	ARKANSAS
BINGHAMTON	ALLEGHENY	BATON ROUGE	BROWARD	CALUMET	BEAUMONT
BOSTON	BALTIMORE	CANAVERAL	CENTRAL N. CAROLINA	CEDAR RAPIDS	CENTRAL TEXAS
BUFFALO	CANTON	CENTRAL SAVANNAH RIV.	CENTRAL VIRGINIA	CENTRAL ILLINOIS	CORPUS CHRISTI
CONNECTICUT <u>K. ANDERSON / D. FORREST</u>	CENTRAL PENNSYLVANIA	CHARLOTTE <u>WILLIAM R. RIGGS</u>	CHATTANOOGA	CENTRAL INDIANNA	DALLAS
ITHACA	CINCINNATI	COASTAL S. CAROLINA	COLUMBIA	CENTRAL IOWA	DENVER
LONG ISLAND	CLEVELAND	DAYTONA	EASTERN N. CAROLINA	CHICAGO	EL PASO <u>J. H. PIERLUISSI</u>
MAINE	COLUMBUS	EAST TENNESSEE	EVANSVILLE-OWENSBORO	FORT WAYNE	FORT WORTH
MID-HUDSON	DAYTON	FLORIDA WEST COAST	FORT WALTON	ILLINOIS VALLEY	HOUSTON
MOHAWK VALLEY	DELAWARE BAY	GAINESVILLE	HAMPTON ROADS	IOWA-ILLINOIS	KANSAS CITY
NEW HAMPSHIRE	EASTERN SHORE	HUNTSVILLE	JACKSONVILLE	MADISON	LAFAYETTE
NEW JERSEY COAST	ERIE	LEXINGTON	LOUISVILLE	MILWAUKEE	OKLAHOMA CITY
NEW YORK	JOHNSTOWN	MEMPHIS	MIAMI	NEBRASKA	OZARK
NORTH JERSEY	LEHIGH VALLEY	MIDDLE TENNESSEE	MISSISSIPPI	NORTHEAST MICHIGAN	PANHANDLE
PRINCETON	LIMA	MOBILE	NASHVILLE	NORTHEAST WISCONSIN	PERMIAN BASIN
PROVIDENCE	NORTH CENTRAL OHIO	NEW ORLEANS	OAK RIDGE	ROCK RIVER VALLEY	ST. LOUIS
ROCHESTER	OHIO VALLEY	ORLANDO	PALM BEACH	SIOUXLAND	SHREVEPORT
SCHENECTADY <u>MICHAEL PENDERGAST</u>	PHILADELPHIA	PANAMA CITY	PENSACOLA	SOUTH BEND	SOUTH PLAINS
SPRINGFIELD	PITTSBURGH	PIEDMONT	RICHMOND	SOUTHEAST MICHIGAN	TULSA
SYRACUSE	SHARON	SAVANNAH	VTIRGINIA MOUNTAIN <u>DICK SKUTT</u>	SOUTHERN MINNESOTA	WEST CENTRAL TEXAS
VERMONT	SOUTHERN NEW JERSEY	WESTERN N. CAROLINA	WINSTON-SALEM	TOLEDO	WICHITA
WORCHESTER COUNTY	SUSQUEHANNA			TWIN CITIES	
	WASHINGTON			WEST MICHIGAN	
	WEST VIRGINIA				

REGION EDUCATION CHAIRPERSONS

REGION 6 (2 columns)	REGION 7	REGION 8	REGION 9	REGION 10
				<u>FAQIR C. KOHLI</u>
SECTION EDUCATION CHAIRPERSONS				
ALAMOGORDO-HOLLOMAN	ALASKA	BAY OF QUINTE	BENELUX	ARGENTINA
ALBUQUERQUE	ANTELOPE VALLEY	CANADIAN ATLANTIC	DENMARK	BAHIA
BOISE	BUENAVENTURA	HAMILTON	EGYPT	CENTRAL AMERICA
CHINA LAKE	EASTERN MONTANA	KITCHENER-WATERLOO	FINLAND	CHILE
FOOTHILL	FORT HUACHUCA	LONDON <u>Brian G. Andrews</u>	FRANCE	COLOMBIA
HAWAII	IDAHO	MONREAL	WEST GERMANY	ECUADOR
LAS VEGAS	LOS ALAMOS	NEW BRUNSWICK	GREECE	MEXICO
LOS ANGELES	METROPOLITAN L.A.	NORTHERN CANADA	IRAN	MONTERREY
MONTANA	OAKLAND-EAST BAY	OTTAWA	ISRAEL	PANAMA
ORANGE COUNTY	PHOENIX	QUEBEC	MIDDLE & SOUTH ITALY	PERU
PORTLAND	RICHLAND	SASKATCHEWAN	NORTH ITALY	PUERTO RICO-VIRGIN IS.
SACRAMENTO	SAN DIEGO	ST. MAURICE	NORWAY	RIO DE JANEIRO
	SAN FRANCISCO	SOUTHERN ALBERTA	POLAND	SAO PAULO
SAN FERNANDO VALLEY	SANTA BARBARA	TORONTO	SPAIN	VENEZUELAN
SAN GABRIEL	SANTA MONICA BAY	VANCOUVER	SWEDEN	
SANTA CLARA VALLEY	SOUTH BAY HARBOR	VICTORIA	SWITZERLAND	
SEATTLE	TUCSON	WINNIPEG	U.K.-REP. OF IRELAND	
SPOKANE	VANDENBERG		YUGOSLAV	
UTAH				
WENATCHEE				

Dear Vince,

You have my support for the best Short Course Program ever.

I will send name(s) by _____ (date)

Here is the person you need in _____ (Region) _____ (Section)

Appointee _____

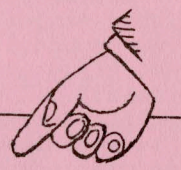
Home Address _____

City _____ State _____ Zip _____

Business Address _____

Position _____ Title _____

Business Phone _____ IEEE Number _____



Tackling the Challenge Of Participation

THESE COURSES ARE CURRENTLY AVAILABLE...

COMPUTER AND INFORMATION SCIENCES

CAMAC
Introduction to Microprocessors
Microprocessors Seminar - 2 Days
"Hands On" Five Day Microprocessor
Computer Aided Filter Design
Electronic Information Processing - 2 Days
Minicomputers - 2 Days
Computer Networks

ELECTRICAL AND ELECTRONIC ENGINEERING

Infrared Testing - 2 Days
Integrated Circuits - 5 Days

BUSINESS AND MANAGEMENT

Communicate for Results
Converting your Ideas Into a Profitable
Business
How to Analyze and Solve Organizational
Problems
How to Start a Business and Make It Grow
John C. Crystal's Life/Work Planning Process
Managing Your Career Assets

COMMUNICATIONS

Engineering Considerations for Microwave
Communication Systems - 3 or 5 Days

POWER

Power Systems - Interconnections - 2 Days
Power Systems - Planning - 2 Days
Power Systems - Relaying - 2 Days
Introduction to Solid State Power
Electronic - 2 Days
Protection and Grounding of Distribution
Systems
Fundamentals of Application of Protective
Relays

All IEEE/EAB Short Courses are of one, two, or
five days duration and are pre-evaluated and
approved by G/S.

EDUCATION BEGINS WITH DESIRE. TELL US YOUR
NEEDS AND WE WILL PUT THE RIGHT COURSES TOGETHER
FOR YOU.

A five-month lead time is necessary to plan a
successful course. Booking now being made for
Spring 1977. ACT NOW.

August 1976

E.E. No. 65 - 2H

STUDENT NEWS



Student dues increase passes--Recognizing the serious state of the Institute's finances, the IEEE Executive Committee recommended, subject to approval of the Board of Directors, a \$2.00 increase in Student dues. The Technical Activities Board also approved a \$1.00 increase in Group and Society fees for Students. Having been increased only once in the last 13 years, Student dues even at the new \$10.00 level represent a considerable savings over the \$45.00 dues charged to higher grade members--therefore, they remain a major inducement to Student membership.

A significant feature offsetting the dues increase is newsavings afforded recent graduates. Previously, recent graduates in Regions 1-7 were extended reduced dues privileges for only one year following graduation. This privilege provided to IEEE Student members continuing their membership following graduation has been extended an additional year. Even with the \$2.00 increase in Student dues--the \$6.00 savings in recent graduate dues actually produces a net decrease in dues as Students continue their membership in the first two years following graduation. The reduced dues privilege now applies for two years uniformly to all IEEE Regions worldwide. Formerly, members outside North America were extended a reduced dues privilege for three years following graduation. Further, there are considerable financial advantages to joining IEEE as Student member rather than waiting until after graduation. For comparative 5-year membership periods an IEEE member, who joined while a Student, actually saves \$70.00 to \$105.00 in dues, depending on whether he began his Student membership in the junior or senior years.

The IEEE Student program affords over 25,000 Student members the opportunity to participate in the activities of the Institute and develop a better awareness of the scope and opportunities in the profession and the future it holds. Important in this regard is a "Career and Life Planning" project, one of the new programs under development as an expanded service to Student members. Concepts involved will be highlighted in a forthcoming issue of the IEEE Student Newsletter. Traditional activities of the Student program--the Student Paper Contest, the Bendix and other award programs, the Student Newsletter, Employment Workshops, the Ham Network, and outstanding programs offered by 436 Student Branches, 228 Sections, and 525 Chapters worldwide--continue to be an important part of a Student's membership benefits. While the dues increase may discourage some, IEEE Student membership remains a tremendous bargain and introduction to the profession.

A new Coordinator of Student Services, Judith Rundle, has joined IEEE's Field Services staff. Ms. Rundle, who reports to Field Services Director Robert K. Asdal, brings to the position experience in organizing regional conferences. Holding an A.B. degree in history from Georgia State University and an M.A. in international relations from the Fletcher School of Law and Diplomacy, Tufts University, Ms. Rundle will administer Institute-wide Student activities and provide Headquarters support for IEEE's approximately 430 Student Branches, the Regional Activities Board's Student Activities Committee (SAC) and the more than 100 Regional and Section SAC's.



Fall membership promotion begins with the distribution of new material to Student Branches in late August. Look for the package and get your promotion program underway. The "Human Race--#2", the second annual Student membership contest, is set to begin on September 1 and run through December 31. Promotional material, supplies, and Branch manuals are available from Judy Rundle, Coordinator of Student Services at Headquarters. Membership promotion is a group effort and we encourage all organizational units to hop on the fall promotion bandwagon. Help our 436 Student Branches boost membership to record levels.

Getting to know each other is fun and productive for both Student Branch and local Section members. Why not work together on your fall programs? How about one or more Branches putting on a meeting for the local Section? Every Section should have an active Student Activities Committee--with enough members to visit local Branches and offer assistance in program-planning. A Section SAC Guide is available from Student Services.

E.E. No. 65-2C

August 1976

Recruiting new IEEE Student Members--The anticipation of large college and university enrollments is on everybody's minds as the summer fades and the fall term quickly approaches. Now is the time to lay out your Branch recruiting program. To make your Branch the biggest and best organization on campus, see the step-by-step program outlined in the newly revised edition of the Student Branch Operations Guide. A dynamic beginning can be made with effective pre-planning, coordinated committee action, and energetic leadership. Look for your Guide in the fall promotional package coming your way soon.

Paper contest entries wanted--An engineer's career constantly demands that he be able to communicate ideas to others. The IEEE Student Paper Contest gives a Student incentive to exercise his skills in research, writing, and presentation of ideas by offering cash awards and recognition. The contest is conducted in all of IEEE's 10 Regions. The authors of the top three papers in each Region will win cash awards of \$200, \$100, and \$50, respectively, and their papers will be published in IEEE 1977 Student Papers. It's been demonstrated that a highly-motivated faculty produces winners, so encourage students to begin their work and enter the local Branch and Section/Area contests. Guidelines, rules, and judging criteria are available from your Regional SAC Chairman or IEEE Student Services Department. Copies of IEEE 1975 Student Papers are still available from IEEE Headquarters for \$8.00 each (Order Code # TT-01016). IEEE 1976 Student Papers will be available in the late fall.

The IEEE T-Shirt Fad-- Do you have your IEEE T-Shirt yet? Twelve-hundred IEEE members already do! It's available in white with blue trim in sizes XL, L, M, S, or XS. Order them from IEEE Service Center (Product #TT01018) for your whole gang. Price in quantities: 1 - 5, \$3.00 each; 6 or more, \$2.25.

Bendix Award entries sought--Student Branches are urged to begin work now on developing a six-page Bendix proposal. Awards of up to \$500 will be made to finance imaginative team projects at Branches. Identify a problem, come up with a solution, and submit a proposal before November 15. Check out your fall promotional package for Bendix posters or write to Judy Rundle.



TECHNICAL ACTIVITIES BOARD

Special Announcement of Interest to Members in the Western USA

A one-day briefing on the National Science Foundation program for "Research Applied to National Needs" (RANN) will be held on Monday, September 20, 1976, 9:00 AM - 5:00 PM, at the Sheraton Hotel, Burlingame, California 94010, (San Francisco Airport.)

Program managers from NSF-RANN Washington and Western Projects Office (831 Mitten Road, Burlingame, telephone 415-876-9076) will provide detailed advice on project priorities and procedures for research seed money. Three speakers have been scheduled:

The Entrepreneur -- Dr. Robert Noyce, Chairman of the Board, Intel Corporation

Venture Capital -- Mr. Reid Dennis, Managing Partner, Institutional Venture Associates

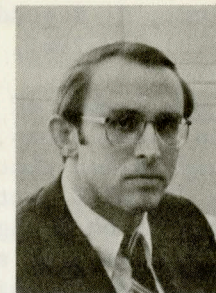
The Applied Scientist -- Prof. John Linvill, Dept. of Electrical Engineering, Stanford University

NSF-RANN personnel will be available to meet with conferees on Sunday afternoon and evening (Sept. 19) and on Tuesday (Sept. 21). Congressional emphasis has been given to research grants to small businesses (less than 500 employees) for programs related to the environment, materials, productivity, resources renewal, and similar national needs. If you are involved with such programs in a small company, you may have much to gain from attending this meeting.

Advance registration (\$20.00) is being handled by the Research Council for Small Business and the Professions, 2120 L Street, N.W., Suite 215, Washington, D.C. 20036, telephone (202) 296-3660. Checks or inquiries should be addressed to this office. Advance registration is recommended because of space limitations.

T-SHIRT		ORDER FORM —Send to IEEE Service Center, SN/L	
Specify Quantity Each Size:		445 Hoes, Lane	
1 - 5 Quantities:	\$3.00 each	Piscataway, NJ 08854	
6 or More Quantities:	\$2.25 each	SHIP TO:	
<input type="checkbox"/> XS	<input type="checkbox"/> S	Name (Type or Print)	
<input type="checkbox"/> M	<input type="checkbox"/> L	Address	
<input type="checkbox"/> XL		City	
Quantity Ordered	_____	State/Country	
Amount Enclosed	_____	Zip	
<small>Make Checks Payable to IEEE New Jersey Residents Add 5% Sales Tax ALLOW 4 WEEKS DELIVERY</small>			

Support services: the vital "back of the house"



In January, six-year Headquarters staffer Charles F. Stewart was named Senior Staff Director of the Support Services Unit, which is largely housed in Piscataway, N.J. Borrowing a term from the banking and investment industries, Mr. Stewart refers to the unit as the "back of the house"; he goes on to stress that while some of its services are rather basic, they're vital to the Institute. They include: Administrative Services, headed up by Raymond Mendolia; Data Processing, managed by Jack Fraum; and a newly formed Marketing Department, directed by Francis Timmons (see p. 4). Specific functions performed by these departments include the handling of: member records, new member elections, dues billing, the annual election, publication fulfillment, and subscription and single copy sales. The Support Services Unit also processes thousands of address changes, inquiries, and occasionally complaints, and it prints, mails, ships, and warehouses a huge volume of material serving IEEE's 175,000 members. All this is accomplished with approximately 110 employees, many of whom have been servicing the Institute's members for 20 or more years.

This is the second in a series detailing key Headquarters functions.

TAB NEWS

The "EE event of the year" is to be 1977's World Electrotechnical Congress to be held in Moscow, June 21-25, according to promoters of the conference. More than 4000 engineers and scientists from throughout the world are expected to participate--among them 1976 Vice President for Technical Activities Robert D. Briskman, who has been appointed to, and will represent IEEE on, the Congress's International Organizing Committee. A call for papers for this potentially extraordinary conference--whose theme is to be "The Present and Future of Electrotechnical Engineering"--was published in the July Spectrum (p. 6) and further

details have been included in Spectrum's August issue.

Wanted: Director of Technical Services. Would you, or someone you know, care to apply for this full-time IEEE Headquarters staff position? Qualifications are listed in a paid ad on p. 99 of Spectrum's June issue. For further information, contact Gene Logan at Headquarters.

PUB NEWS

Hot off the IEEE Press are three new books: "Computer Networking," edited by Robert Blanc and Ira Cotton; "Solar Cells," edited by Charles E. Backus; and "Waveform Quantization and Coding," edited by Nuggehally S. Jayant. A 376-page volume, "Computer Networking" contains 46 papers covering the fundamentals of the topic and complements "Computer Communications," edited by P. E. Green and R. W. Lucky and published by IEEE Press in 1975. The book, which is sponsored by the Computer Society, is priced at: \$8.95, paperbound, and \$17.95, clothbound (discounted to \$13.45 for members).

"Solar Cells," a 512-page collection of 42 papers, is sponsored by the Electron Devices Society and is available for \$12.45 in paper and \$24.95, clothbound (\$18.75 for members). "Waveform Quantization and Coding," a compendium of 69 papers, is a 624-page book sponsored by the Acoustics, Speech, and Signal Processing Society and the Communications Society. The price is \$14.95, paperbound, and \$29.95, clothbound (\$22.45 for members).

A Certificate of Merit has been awarded to the IEEE Communications Society Magazine "in recognition of exceptional achievement in technical communication." Sponsoring the award was the Society for Technical Communication, a nonprofit educational organization devoted to all facets of the graphic arts and technical communication. Publication Production Supervisor Carolyn Elenowitz, who is responsible for the IEEE Transactions on Communications as well as their magazine, accepted this award on behalf of the Communications Society.

A new staffer has joined the Pub group at Headquarters. Otto W. Vathke, former editor-in-chief of Automotive Engineering, the monthly magazine of the Society of Automotive Engineers, has come on board as Publications Business Manager. Mr. Vathke brings to this

PUB NEWS (cont'd)
position degrees in both engineering and
business administration.

Spectrum Editor and Publisher Donald
Christiansen has been elected to the Board
of Directors of the Society of National
Association Publications. The Society
counts 215 society, association, and as-
sociate members.

EAB NEWS

Pre-college guidance materials have been
made available through Headquarters. As-
sembled by IEEE's Educational Activities
Board, the following brochure and booklet
are aimed at assisting IEEE Sections and
guidance counsellors in advising secondary
school students: "Careers in Electrical/
Electronics Engineering," in 15 pages, in-
troduces the high school student to the
world of electrical/electronics engineer-
ing--individual copies are free; for ten
or more copies, 50¢ per copy is requested.
"Decisions about Careers in Engineering--
A Guide for Those Who Counsel High School
Students" is a reference booklet that pro-
vides insight into the "critical path" in
guidance activities--it costs \$1 per copy.
For further information, contact Emma White
at Headquarters.

CONVENTION NEWS

WESCON will celebrate its silver anniver-
sary with the biggest show in years begin-
ning on September 14 at the Los Angeles
Convention Center. Some 400 companies,
occupying 725 exhibit booths, will display
their wares at this 25th annual Western
Electronic Show and Convention. Concur-
rently, a professional program (see yellow
insert, p. 21), consisting of 35 half-day
sessions, will be offered in meeting rooms
on the mezzanine level of the Convention
Center. A keynote luncheon, to be held on
September 13 at the Los Angeles Hilton
Hotel, will precede the opening of the
show and convention. Further details can
be found in the September issue of Spectrum;

for information, call William C. Weber, Jr.,
WESCON General Manager, 999 North Sepulveda
Blvd., El Segundo, Calif. 90245 -- tel.:
(213) 772-2965.

A new member of the Electrical and Electron-
ics Exhibitions, Inc. staff--the nonprofit
corporation that runs ELECTRO and WESCON --
is Joseph C. Antonaccio who has been named
Convention Manager. Mr. Antonaccio was very
active in IEEE's New York area Student Acti-
vities during his college days.

AWARDS

Reminder: September 15 is the final date for
nominations for the W.R.G. Baker and Browder
J. Thompson Memorial Prize Paper Awards.
Contact Una Lennon at Headquarters.

WELCOME ABOARD

Francis X. Timmons has joined IEEE in the
new position of Senior Marketing Manager.
Mr. Timmons brings to the Institute broad
experience in marketing and advertising
promotion having served such accounts as
Johns Manville, A. M. Best, Dow Jones News
Service, the National Observer, and IBM,
among others. He will work with Dudley
Broderick in the development of a fully in-
tegrated marketing operation that will be
equipped to handle both membership promotion
and renewal, and publication and education-
al promotion sales.

Rochelle M. Lubetkin has joined IEEE's
Piscataway Service Center staff as Manager
of Publication Inventory--a position to
which she brings a wealth of experience in
warehouse management and inventory control.

NEW CHAPTERS

The Joint Aerospace and Electronic Systems/
Communications Chapter of the All-India
Council

The Computer Chapter of the Princeton
Section

The Joint Engineering Management/Education/
Professional Communication Chapter of the
Los Angeles Council

Centerfold inserts

Ivory-- <u>Spectrum</u> questionnaire	2A, 2B
Blue--Student news	2C, 2D
Pink--EAB courses and recruitment form	2E, 2F, 2G, 2H
Yellow--WESCON program	2I, 2J
Green--NSF/RANN Conference	2K, 2L